

MULTIFUNCTIONAL DIGITAL COLOR SYSTEMS /
MULTIFUNCTIONAL DIGITAL SYSTEMS

Printing Guide

■ Printing files from USB media (USB Direct Printing)

USB Direct Printing refers to the printing of files saved in a USB storage device that is connected to the USB port on the equipment. With this feature, you can print PDF, encrypted PDF (file extension: ".pdf"), XPS (file extension: ".xps"), JPEG (file extension: ".jpg" or ".jpeg"), PRN (file extension: ".prn"), and PS (file extension: ".ps") files.

Notes

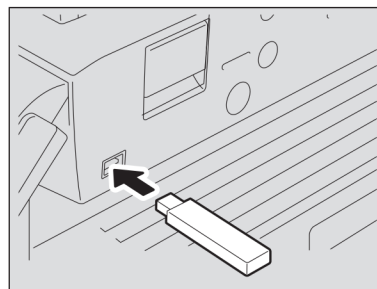
- USB Direct Printing requires the USB Direct Print setting to be enabled on TopAccess. For details, refer to the **TopAccess Guide**.
- You cannot specify which page(s) of the selected file to print. All pages are to be printed.
- USB Direct Printing supports the printing of PDF files whose versions are from 1.3 to 1.7.
- With this feature, the equipment can print encrypted PDF files whose encryption level is either "40-bit RC4" or "128-bit RC4."
- The feature does not support encrypted PDF files whose encryption level is [128bit AES], and some files of other encryption levels may not be printable as well. In these cases, print these files from a client computer.
- For printing the PRN files, the page description languages supported by USB Direct Printing are PostScript 3, PCL5e, PCL5c, PCL6 and XPS.
- Do not turn on the equipment when a USB storage device is connected to the port.
- The USB storage device should meet the following requirements:
 - FAT16 and FAT32 formats
 - Single-partition (USB media with multiple partitions are not supported.)
 However, some of the devices may not be used in this equipment, even though these requirements have been met.
- When a USB storage device is used for the model below, attach the front USB cable to the equipment and connect the USB storage device to the USB port.
 - e-STUDIO2550C Series
- The model below does not support USB Direct Printing.
 - e-STUDIO2551C Series

1 Connect your USB storage device to the USB port on the equipment.

In a few seconds, "Found USB DEVICE" appears at the lower left of the screen.

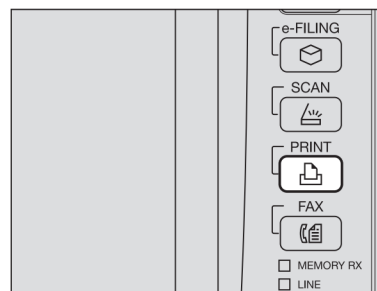
Note

Do not disconnect the USB storage device when "USB DEVICE in use Do not remove USB DEVICE" is displayed on the screen. Removing the device while the message is displayed could destroy the data in the device or cause a malfunction of the equipment.



2 On the control panel, press the [PRINT] button.

- If the equipment is not managed by department codes, proceed to Step 4.



- 3** Enter the department code using the on-screen keyboard and digital keys, and then press [OK].

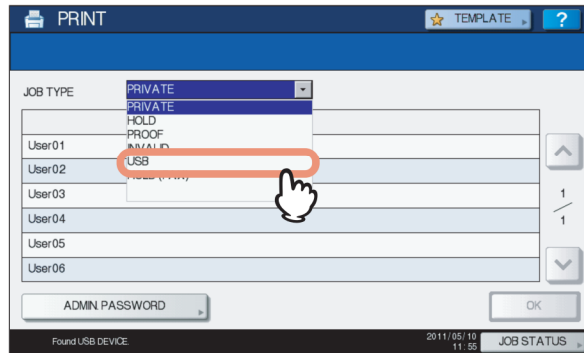


5

Note

The above screen will not be displayed when the equipment is not managed by department codes. Proceed to the next step.

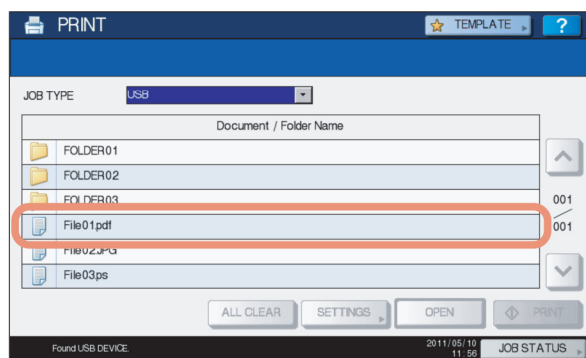
- 4** Select [USB].



Note

Do not disconnect the USB storage device when "USB DEVICE in use Do not remove USB DEVICE" is displayed on the screen. Removing the device while the message is displayed could destroy the data in the device or cause a malfunction of the equipment.

5 In the list of files, select the file that you want to print. Select the files you want to print from the list.

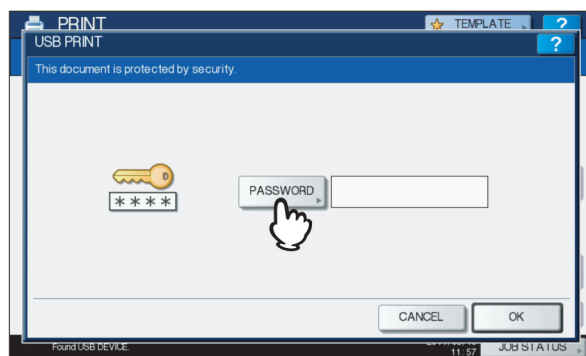


- If the target file is not displayed on the screen, use and to change between pages.
- To select a file contained in a folder, select the folder and press [OPEN]. In the list of files that appears, select the desired file to print.
- If you select an encrypted PDF file for which a password has been set, the password entry screen is displayed. Proceed to Step 6.
- If you change the paper size, stapling position, 2-Sided Printing setting or PDF Overprint setting, proceed to Step 9. If you start printing without changing any of them, proceed to Step 10.

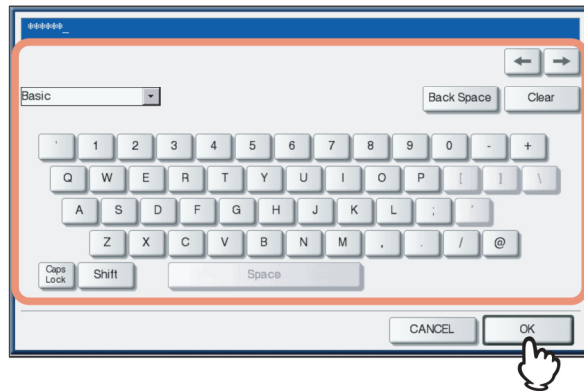
Note

Do not disconnect the USB storage device when "USB DEVICE in use Do not remove USB DEVICE" is displayed on the screen. Removing the device while the message is displayed could destroy the data in the device or cause a malfunction of the equipment.

6 If you select an encrypted PDF file for which a password has been set, press [PASSWORD].



7 Using the on-screen keyboard and the digital keys, enter the user or master password for the encrypted PDF file, and then press [OK].



5

Tips

- If the selected encrypted PDF file was created on Adobe Acrobat 6.0 or later, enter the document open password or permissions password.
- To print an encrypted PDF file for which “Low Resolution (150 dpi)” is set on Adobe Acrobat, you must enter the permissions password that was set for the file when it was created.

8 Press [OK].

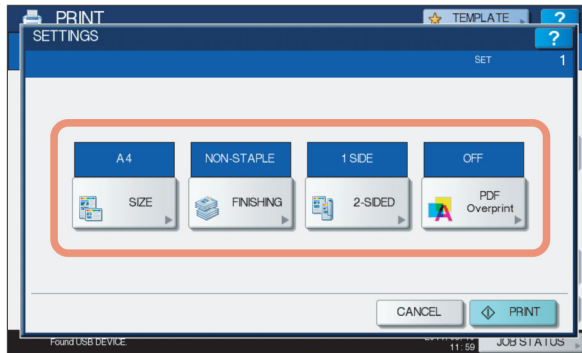


- If you change the paper size, stapling position, 2-Sided Printing setting or PDF Overprint setting, proceed to Step 9. If you start printing without changing any of them, proceed to Step 10.

9 Press [SETTINGS] and then select the setting items as required.

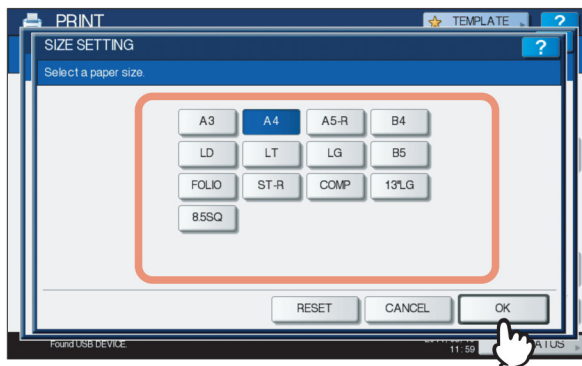
Tips

- To print a JPEG file, you can set [SIZE].
 - To print a PDF file, you can set [FINISHING], [2-SIDED] and [PDF Overprint].
- Press any of [SIZE], [FINISHING], [2-SIDED] and [PDF Overprint].
 - Select the desired item.
 - Press [OK] when you finish the setting.



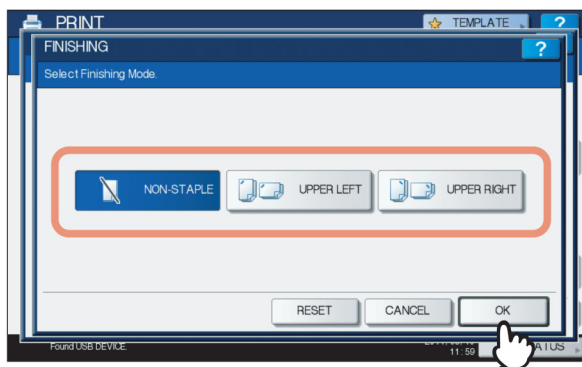
- SIZE**

Set the paper size.



- FINISHING**

Set the position of stapling.



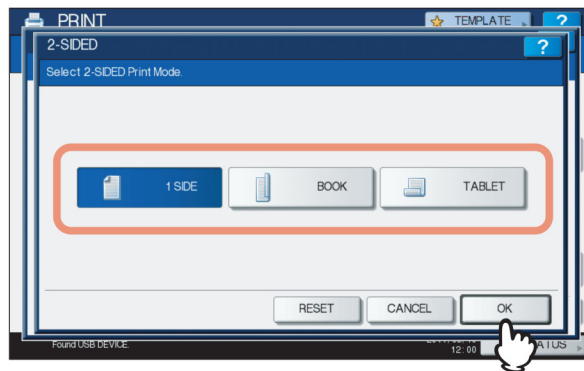
NON-STAPLE — Select this not to staple.

UPPER LEFT — Select this to staple at the upper left corner.

UPPER RIGHT — Select this to staple at the upper right corner.

- **2-SIDED**

Set 2-Sided Printing.



5

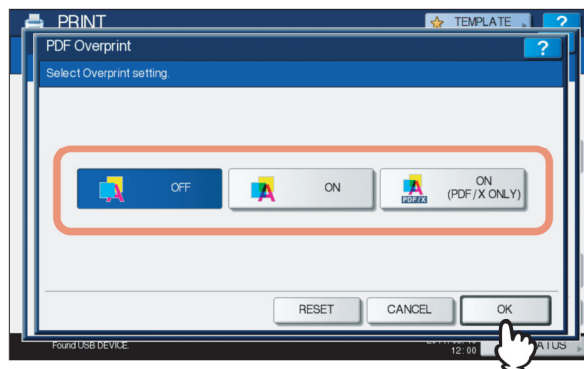
1 SIDE — Select this to print only one side.

BOOK — Select this to print on both sides by setting a vertical binding margin. Pages are turned over from right to left.

TABLET — Select this to print on both sides by setting a horizontal binding margin. Pages are turned over from bottom to top.

- **PDF Overprint**

If a PDF file contains an overprint, this is also overprinted on a print job when this option is enabled.



OFF — Select this not to overprint the job.

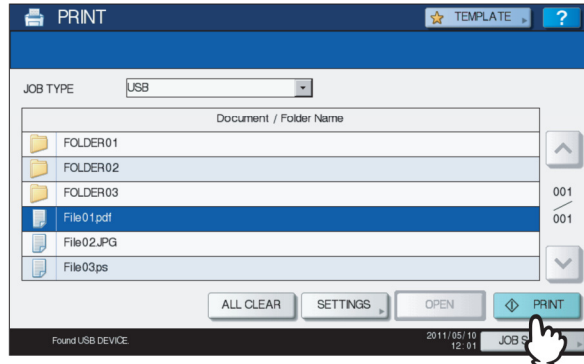
ON — Select this to enable overprint the job.

ON (PDF/X ONLY) — Select this to enable overprint the job only when the original PDF file is complied with PDF/X specifications.

Notes

- The paper size can be set only when you print a JPEG file. (If you print more than one JPEG file continuously, the paper size you set for the first file in this step is applied to the second and the following.)
- The PDF Overprint setting is applied only to objects overprinted in the original PDF file. If you want to preview the effect of overprint in the PDF file, you can do it with the Overprint Preview mode of Adobe Reader by switching the preview screen.

10 Press [PRINT].



- The equipment starts printing. The printouts are directed to the receiving tray.
- The job in progress can be monitored from the [JOBS] tab listing the Normal Print jobs.

Before Disconnecting the USB Storage Device:

Make sure that "USB DEVICE in use. Do not remove USB DEVICE." is not displayed on the touch panel. If it is, do not disconnect the USB storage device; removing the device while the message is displayed could destroy the data in the device or cause a malfunction of the equipment.